

skheme®

porter

porter



carrara square



artic square



trachite square



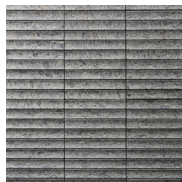
volcano square



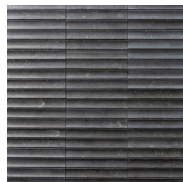
carrara concave



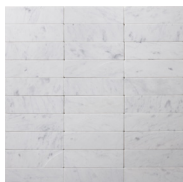
artic concave



trachite concave



volcano concave



carrara brick



artic brick



trachite brick



volcano brick



trav square



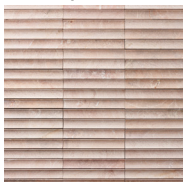
zarci square



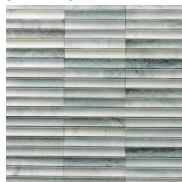
jade square



trav concave



zarci concave



jade concave



trav brick



zarci brick



jade brick

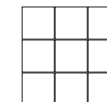


60x200mm



mosaic

30x198mm



mosaic

100x100mm



fire resistant



mosaic



natural stone



3D format



indoor only



V4 variation

PRODUCT SPECIFICATIONS

format	size	finish	thickness	slip rating	colour
mosaic	100x100mm (300x300mm sheet)	tumbled	8mm	N/A	all colours
mosaic	30x198mm (198x318mm sheet)	honed	13mm	N/A	all colours
brick	60x200mm	tumbled	8mm	N/A	all colours

MATERIAL

natural stone

VARIATION

V4

TILE EDGE

rectified

Colours shown in images may differ due to variations in photographic conditions and screen displays. Samples provided may not accurately reflect the exact shade or batch supplied, as variation is an inherent property of tiles and stone.

Listed sizes and thicknesses are nominal and may vary slightly from actual working dimensions.

A 2/12-14 Neild Avenue Rushcutters Bay NSW 2010 | P 02 8755 2300 | W www.skheme.com | E info@skheme.com

left pictured: volcano square
right pictured: jade brick



blackwood cafe by richards stanisich



melissa peters clinic by alicia xiberras

left pictured: trav concave
right pictured: jade concave



technical data

PROPERTIES	TEST METHOD	PRESCRIBED VALUES	VALUE
water absorption	ISO 10545-3	≤0.5%	≤0.1%
bending strength	ISO 10545-4	≥ 12 MPA	≥ 33.5MPA
breaking strength	ISO 10545-4	≥ 350 N	780N
abrasion resistance	ISO 10545-7	Max. 175 mm ³ PEI 1-5	class 3
resistance to chemicals	ISO 10545-13	Household chemicals & swimming pool salts	GA
		Low concentration of acids & alkalis	GLA
resistance to staining	ISO 10545-14	Minimum class 3	class 5



Please note that all products must be fabricated using score & snap method and/or wet cutting in conjunction with AS/NZS 1716:2012, AS/NZS 1715:2009, AS/NZS 60335.2.69:2017. For more information please refer to: <https://www.safework.nsw.gov.au>